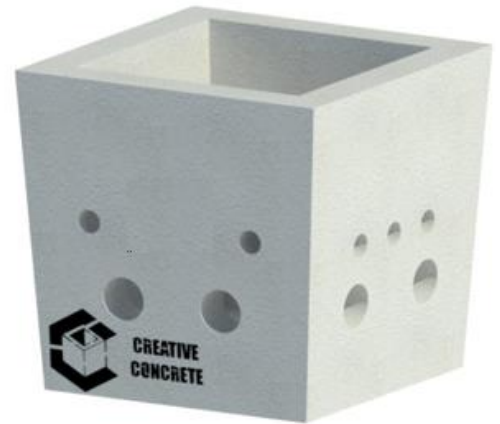


## Declaration of Performance

DOP/CE/9072

**Junction Box 5 Chamber**  
**Ballinamere, Tullamore, Co. Offaly**



- 1. Unique Identification code of the product - type:** Code – 9072 – Junction Box 5 - Chamber
- 2. Intended use:** Precast Component for use as an inspection Chamber
- 3. Manufacturer:** Creative Concrete, Ballinamere, Tullamore, Co. Offaly
- 4. Authorised Representative:** N/A
- 5. System of AVCP:** System 4
- 6. Harmonised Standard:** EN 1917:2002&AC:2008 **Notified body:** N/A
- 7. Declared Performance**

Characteristic	Declared Performance	Provisions to Annex ZA (informative) of I.S EN 1917:2002
<b>Watertightness:</b>	No Leakage of joint or unit at 30kPa (0,3) bar internally	4.3.8
<b>Mechanical resistance:</b>	Vertical Strength 400kN	4.3.5
<b>Opening Size:</b>	(LN x WN) 600mm, 600mm Square	4.3.3.5
<b>Durability:</b>	Adequate for normal serviceability conditions	4.3.10

8. N/A

<https://creativeconcrete.ie>

The performance of the product identified above is in conformity with the set of declared performances. This declaration of performance is issued in accordance with Regulation (EU) No 305/2011, under the sole responsibility of the manufacturer identified above.

Signed for and on behalf of the manufacturer by:

**Chris O'Reilly, Technical & Production Manager, Creative Concrete, Ballinamere, Tullamore, Co. Offaly**

**Date: 13th September 2024**

**CE**

**Creative Concrete**

**23**

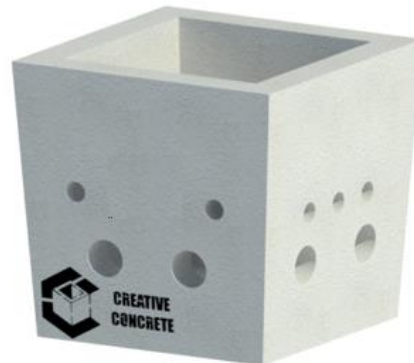
**EN 1917:2002&AC:2008**

**Junction Box 5 Chamber**

**(LxWxH)800mm, 800mm, 800mm**

1. **Unique Identification code of the product - type:** Code – 9072 – Junction Box 5 Chamber
2. **Intended use:** Precast Component for use as an inspection Chamber
3. **Manufacturer:** Creative Concrete, Ballinamere, Tullamore, Co. Offaly
4. **Authorised Representative:** N/A
5. **System of AVCP:** System 4
6. **Harmonised Standard:** EN 1917:2002&AC:2008 **Notified body:** N/A

<b>Watertightness</b>	Declared Value	No Leakage of joint or unit at 30kPa (0,3) bar) internally
<b>Mechanical Resistance</b>	Declared Value	Vertical Strength 400kN
<b>Opening Size</b>	Declared Characteristic	(LN x WN) 600mm, 600mm Square
<b>Durability</b>	Declared Performance	Adequate for normal serviceability conditions



Signed for and on behalf of the manufacturer by:

**Chris O'Reilly, Technical & Production Manager, Creative Concrete, Ballinamere, Tullamore, Co. Offaly**

**Date: 13<sup>th</sup> September 2024**