

Declaration of Performance

DOP/CE/9028

ESB Mini Pillar Vault
Ballinamere, Tullamore, Co. Offaly



- 1. Unique Identification code of the product - type:** Code – 9028 – ESB Mini Pillar Vault
- 2. Intended use:** Reinforced Precast Component for use as an inspection Chamber
- 3. Manufacturer:** Creative Concrete, Ballinamere, Tullamore, Co. Offaly
- 4. Authorised Representative:** N/A
- 5. System of AVCP:** System 4
- 6. Harmonised Standard:** EN 1917:2002&AC:2008 **Notified body:** N/A
- 7. Declared Performance**

| Characteristic | Declared Performance | Provisions to Annex ZA (informative) of I.S EN 1917:2002 |
|-------------------------------|---|---|
| Watertightness: | No Leakage of joint or unit at 30kPa (0,3) bar) internally | 4.3.8 |
| Mechanical resistance: | Vertical Strength 140kN | 4.3.5 |
| Opening Size: | (LN x WN) 505mm, 680mm Rectangular | 4.3.3.5 |
| Durability: | Adequate for normal serviceability conditions | 4.3.10 |

8. N/A

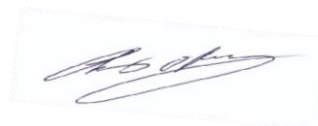
<https://creativeconcrete.ie>

The performance of the product identified above is in conformity with the set of declared performances. This declaration of performance is issued in accordance with Regulation (EU) No 305/2011, under the sole responsibility of the manufacturer identified above.

Signed for and on behalf of the manufacturer by:

Chris O'Reilly, Technical & Production Manager, Creative Concrete, Ballinamere, Tullamore, Co. Offaly

Date: 02nd September 2022





Creative Concrete

17

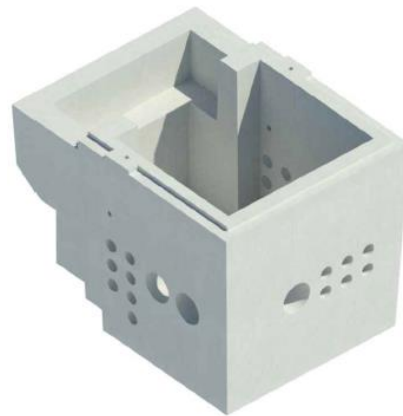
EN 1917:2002&AC:2008

ESB Mini Pillar Vault

(LxWxH) 1270mm, 960mm, 915mm

1. **Unique Identification code of the product - type:** Code – 9028 – ESB Mini Pillar Vault
2. **Intended use:** Reinforced Precast Component for use as an inspection Chamber
3. **Manufacturer:** Creative Concrete, Ballinamere, Tullamore, Co. Offaly
4. **Authorised Representative:** N/A
5. **System of AVCP:** System 4
6. **Harmonised Standard:** EN 1917:2002&AC:2008 **Notified body:** N/A

| | | |
|------------------------------|-------------------------|---|
| Watertightness | Declared Value | No Leakage of joint or unit at 30kPa (0,3 bar) internally |
| Mechanical Resistance | Declared Value | Vertical Strength 140kN |
| Opening Size | Declared Characteristic | (LN x WN) 505mm, 680mm Rectangular |
| Durability | Declared Performance | Adequate for normal serviceability conditions |



Signed for and on behalf of the manufacturer by:

Chris O'Reilly, Technical & Production Manager, Creative Concrete, Ballinamere, Tullamore, Co. Offaly

Date: 02nd September 2022